

LEOMAT CONSTRUCTION (PTY) LTD COMPANY PROFILE

PRESENTED TO :

DATE: 2017



LEOMAT CONSTRUCTION (PTY) LTD
CIDB 9CE RATED | BBBEE LEVEL 2 EMPOWERING SUPPLIER

ENGINEER | CONTRACTOR | PARTNER

5 CHLOOKRING, ALTON, RICHARDS BAY, SOUTH AFRICA
TEL : (+27) 035 797 4611
WEBPAGE : www.leomat.co.za

Brief History and Overview

Leomat is a private family-owned, multidisciplinary civil engineering construction company based in Kwa-Zulu Natal, operating throughout Southern Africa. Since its inception in 1979, Leomat has grown into a multi-faceted company offering clients a number of professional services backed by a solid reputation built over many years of successfully completed contracts.

The main services undertaken are civil engineering construction, bulk earthworks, road and pipeline construction, concrete structural construction, industrial and process plants, water infrastructure, mining infrastructure and the design and construction of turnkey projects.

From its early beginnings in the construction industry, Leomat has expanded to include Plant Hire and Material Handling of industrial and mining materials amongst the various services it offers. With the expansion into these specialized sectors has also come the need to undertake the design and manufacture of modifications to equipment to tailor them to the client's requirements.

With over 35 years of experience, a highly skilled management team as well as over 600 staff, Leomat has established itself as one of the leading South African construction companies. As such the company is registered (registration number: 104992) with the Construction Industry Development Board ("CIDB"), and has been rated as 9CE (Civil Engineering) – able to do government work of unlimited value. This rating is the highest designated civil engineering rating achievable for a construction company, and Leomat is therefore not limited in the size of civil engineering projects it may tender for in South Africa.



Brief Company timeline

Year	Description of event
1979	<ul style="list-style-type: none">Leomat Construction (Pty) Ltd registered
1981	<ul style="list-style-type: none">Leomat Plant Hire (Pty) Ltd registeredLeomat relocates to Empangeni
1989	<ul style="list-style-type: none">Leomat MD Leo Mattioda named Zululand Business Person of the Year
2000	<ul style="list-style-type: none">The Leo Mattioda Family Trust is established and ownership of Leomat Plant Hire and Leomat Construction are transferred to the TrustLeomat Durban Branch Established
2002	<ul style="list-style-type: none">Memorandum of Agreement is reached with Paolo Mattioda and Andrea Ramaccio to sell 40% of Leomat Construction to them.
2008	<ul style="list-style-type: none">Shares valued at 20% each transferred into Paolo and Andrea's names.
2014	<ul style="list-style-type: none">Rated as 9CE by CIDB
2016	<ul style="list-style-type: none">BBBEE Empowerment deal is concluded with MENSTON HOLDINGS to sell 26% of Leomat Construction – giving the company 26.02% Black ownership and 13.01% Black Woman OwnershipAchieve BEE Level 2 Empowering Supplier status

BBBEE Recognition Spend

Leomat Construction has been assessed by VERIDEX – an IRBA approved auditing agency.



MENSTON HOLDINGS EMPOWERMENT DEAL

Leomat Construction concluded a 26% BEE empowerment deal with Menston Holdings in April 2016. The deal has boosted Leomat's total black ownership to 26% and 13% black female ownership – giving the company a BBBEE Level 2 Empowering Supplier Status

Competitive Advantage

High Health, Safety and Environment (“HSE”) standards Leomat has a dedicated HSE team that is based at the head office. In 2007 Leomat Plant Hire (Pty) Ltd and Leomat Construction (Pty) Ltd registered with the Kwa-Zulu Natal Builders and Allied Industry Association, whereby both companies achieved their five-star grading in occupational health, safety and environment. To date both companies have continuously maintained this 5-star status year-on-year.

Professionally qualified Key Personnel Leomat has a team of qualified and experienced civil engineers - of which 9 are registered with SACPCMP as Professional Construction Managers, and 1 registered as Health and Safety Construction Manager.

24 Hour Operations Leomat is available 24 hours, and works through the Builders Shut in December allowing us to be available for any emergency works during the Holiday season.

In-house Workshop facilities Leomat has built its own fully-equipped workshop facility for the servicing, repair and maintenance of its heavy earthmoving equipment fleet.

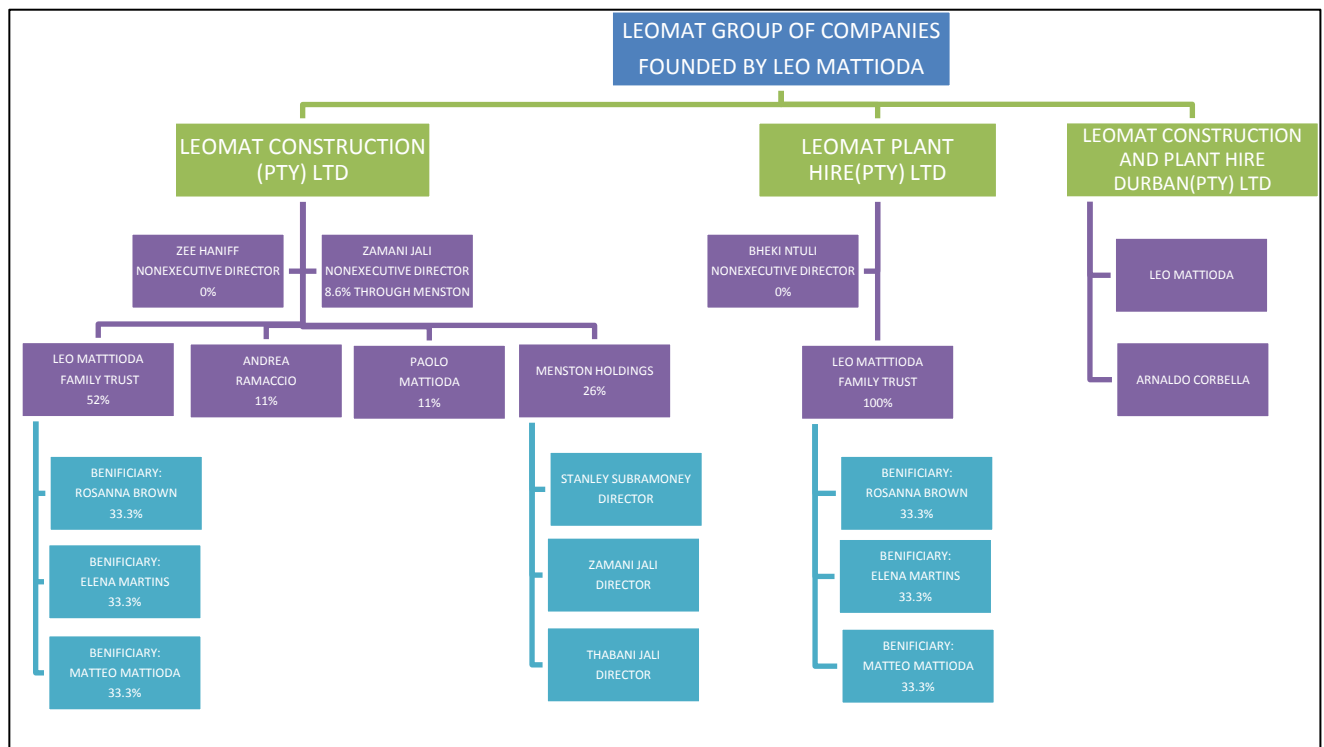
Company Structure

The Leomat Group of Companies is a wholly South African, privately owned group of companies with the Head Office based in Richards Bay near Durban, Kwa-Zulu Natal. The Leomat Group of companies is comprised of three individual Pty Ltd companies, they are:

- Leomat Construction Pty Ltd (CIDB9CE, CIDB6GB and CIDB8SB),
Note: Leomat Construction computes as a CIDB 9CE. This rating is the highest designation rating achievable for a construction company, allowing Leomat to tender on contracts of unlimited value.
- Leomat Plant Hire Pty Ltd (CIDB8CE) and
- Leomat Construction and Plant Hire Durban Pty Ltd (CIDB6CE)

The individual companies all offer unique products and services to the Construction, Mining, Energy and various Government departments. The group employs professionals with qualifications across a range of specialties from civil earthworks, project management and plant operation. The company has experienced significant growth over the past ten years and continues to grow despite the industry trend.

The below diagram shows the ownership structure of the three companies:



Leomat Services Offered

Leomat's team of qualified and experienced engineers and personnel has extensive experience in many and varied civil projects, and over the past 38 years the team has developed and nurtured the required skills to produce quality works within budgetary and time constraints, that are normally associated with in the civil construction industry.

As such Leomat has successfully completed numerous contracts to the satisfaction of both our public and private clients. Irrespective of the contract size and value we pride ourselves on our high levels of service and professionalism with which we manage and deliver all our contracts.

Leomat works with a wide and varied spectrum of clients, and our focus is to comply with and focus on our client's individual needs. .

It is in our family based culture to form close working relationships with all parties concerned based on trust and mutual respect.

Leomat offers numerous services to clients including various Construction, Civil Engineering and Plant Hire services such as:

Road and Earthworks

Bulk earthworks

Storm water drainage

Layer works

Subsurface Drainage Systems

Surfacing

Water Retainer Structures

Dam walls

Impoundment dams

Concrete Works

Bridges

Pump Stations

Reservoirs

Structures

Culverts

Infrastructure Projects

Storm water drainage

Sewer Reticulation

Roads

Pump stations

Water Reticulation

Material Handling Projects

Contract Mining,

Material handling,

Other

General Building,

Complete Process Services

Mining Infrastructure and Related Services

Leomat has extensive experience in Mine establishment in terms of delivery of mine infrastructure and related services. Our client list is a reflection of our delivery capability.

Our experience in working within remote locations, has provided Leomat with the skills to work together with the local communities in which our clients operates and gain acceptance from these communities, which is key in the successful establishment and operations of a mine.

Projects undertaken for mining clients include but are not limited to :

Mine Infrastructure

Concrete Structures and bases

Process plant civil works

Storage and Workshop buildings

Bunkers and Retaining and structures.

Material lay down and handling areas

Construction of Slime Dams

Conveyors

Concrete Reservoirs

Road Construction and maintenance

Bulk earthworks

Structural Elements

Pipeline installations

Material Handling

Run of Mine

Haul



Experience in Mine Establishment and Upgrade

SOMKHELE – R400 million
Civil Infrastructure establishment
incl. Roads, dams, structures,
processing plants.



TRONOX (formerly Exxaro)– R600 million
Movement of Mine
Infrastructure from
Hillendale to Fairbreeze

**CLIENT LIST FOR
UPGRADE OF MINES :**

**ZAC MINE
RBM
RBCT
CONTINENTAL COAL**



Transport Sector

Leomat delivers a comprehensive road and earthworks construction services across all construction sectors for both public and private clients. These services include :

Construction of New Roads

Upgrade and Rehabilitation of existing roads

Construction of Bridges

Construction of Cuverts

Structures

Water Projects Civil work : Construction of Waste water treatment plant, Water purification works, Storage reservoirs and pipelines

Structural Buildings including structural steel work and cladding. Civil works for pollution control and upgrade to Environmental issues. Storm water drains and pipes. Concrete Parking, lay down areas and roads. Demolition works.

Municipal Works : Roads, Parking areas, Storm water Culverts, Canals and pipelines, Water and Sewer reticulation, Industrial buildings and various miscellaneous works

Township / Industrial / Real Estate and Municipal Services

The main activities undertaken by Leomat in this sector comprise of the following type of works :

Bulk Earthworks

Platform construction

Bulk service reticulations

Bulk Pipelines

Retaining Structures

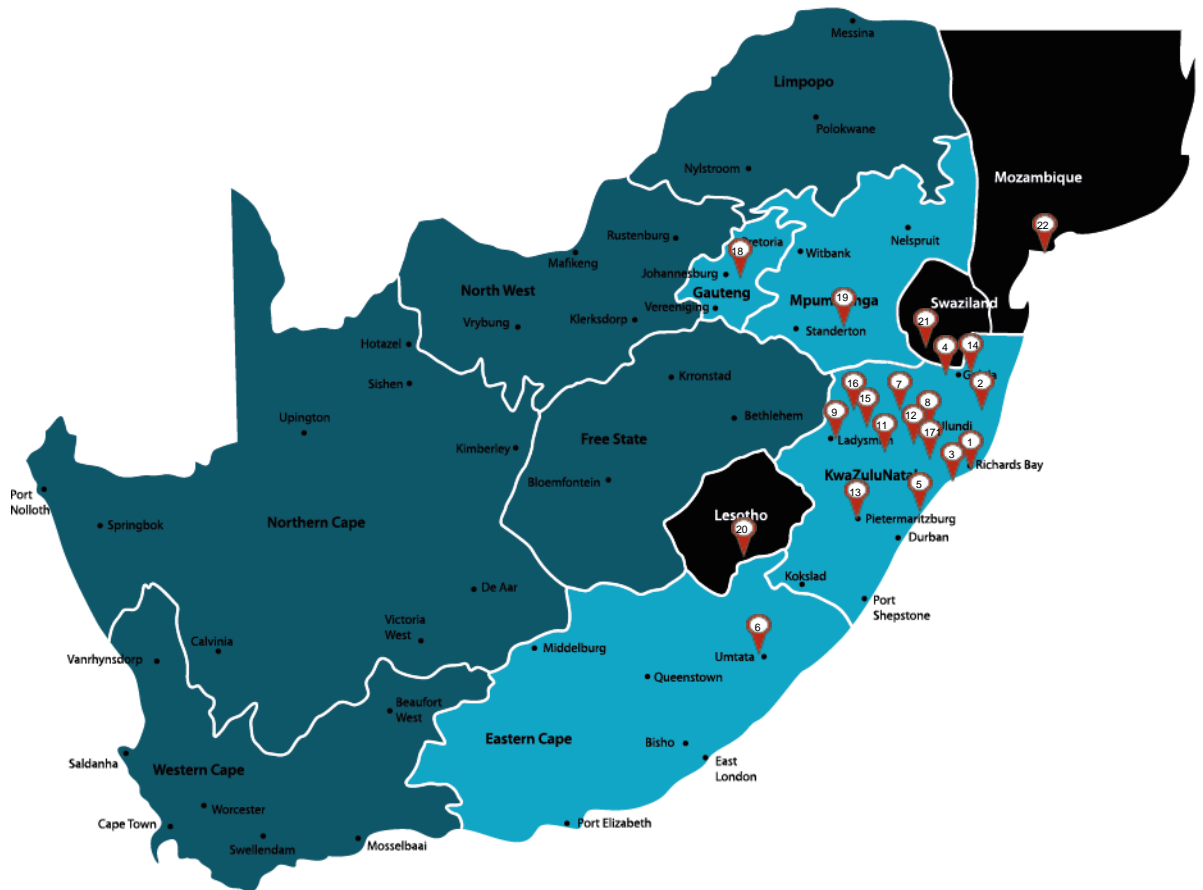
Material Handling

Leomat handles various materials for the industrial and mining sector including:

**Coal handling,
Timber grab, Wood chips, Wood bark transportation
Waste pulp transportation
Sulphur, Salt, Titanium
Heavy sand minerals
Landfil**

Geographic Footprint

The company has a diversified customer base within numerous industries. The highest market penetration is in the KZN province of South Africa. We currently operate 70% of our activities within KZN, with 30% of our activities in Mpumalanga, Gauteng, Lesotho, Swaziland and the Eastern Cape.



Equipment and In-house Workshop Resources

- Leomat currently owns a fleet of 250 plus heavy earthmoving equipment – please see our fleet list attached.
- Before establishing equipment on site, all machines are taken to our in-house workshop to check and ensure safety and equipment compliance to the clients requirements, including hooters, camera's, reverse sirens, fire extinguishers etc.
- Any changes needed to be optimised will be done to the working tools such as buckets and tools of the equipment at our in-house workshop
- Over and above the equipment and resources for all Contract Mining, Material Handling and Plant Hire, our machines are new series machines which comply with EU emission standards.

Professional Personnel

Our team of qualified and experienced civil engineers – including registered SACPCMP Professional Construction Managers - and administrative staff are always on hand to ensure that our commitments to our clients are met safely, on time and on budget.

The below table lists our employee's professional memberships:

MEMBER DETAILS	ASSOCIATION	MEMBER NUMBER	MEMBER STATUS
LCG MATTIODA	ECSA SACPCMP	860461 C/538/2006	Professional Engineer – Civil Professional Construction Manager
PAV MATTIODA	SACPCMP	C/547/2006	Professional Construction Manager
AC RAMACCIO	ECSA SACPCMP	980484 C/354/2005	Professional Engineer – Civil Professional Construction Manager
S KHANYILE	ECSA	20130236	Professional Engineer – Civil
L FERREIRA	SACPCMP	C/763/2007	Professional Construction Manager
B CONWAY	SACPCMP	C/906/2010	Professional Construction Manager
C FUTCHER	SACPCMP	CHSM/036/2015	Construction Health and Safety Manager
D HLATSWAYO	SACPCMP	CHSO/251/2016	Construction Health and Safety Officer
CW FROST	ECSA SACPCMP	20055455 A/272/2009	Candidate Engineer Candidate Professional Construction Manager
RA BROWN	SAICA		Chartered Accountant (SA)

Safety-Health-Environment

Leomat Construction is committed to deliver a very high standard of health and safety and environment on every project we commit to. We pride our self in our high health and safety and environment standards we set out to achieve.

Leomat has a dedicated HSE team that is based at the head office. In 2007 Leomat Plant Hire (Pty) Ltd and Leomat Construction (Pty) Ltd registered with the Kwa-Zulu Natal Builders and Allied Industry Association, whereby both companies achieved their five-star grading in occupational health, safety and environment. To date both companies have continuously maintained this 5-star status year-on-year.



Thank you for taking the time to go through our Company profile. If there are any questions or comments, please feel free to contact us.



ENGINEER | CONTRACTOR | PARTNER

5 CHLOOKRING, ALTON, RICHARDS BAY, SOUTH AFRICA

**HEADOFFICE TEL :
(+27) 035 797 4611**

**EMAIL :
tenders@leomat.net**

**WEBPAGE :
www.leomat.co.za**

**CONTACT PERSON: LEO MATTIODA
MANAGING DIRECTOR
leo@leomat.net**